

SHABB ATTO

The World's Best *Shabbat Scooter!*



movinglife®

Introduction to Jewish “Shabbat” and the challenges it creates for Jewish people who are in a need for mobility.

Shabbat - The Core of Jewish Life

Shabbat (also known as "Shabbos" or the "Sabbath"), is a Jewish day of rest and spiritual enrichment that begins every week on Friday at sunset and ends on the following evening after nightfall. The word "Shabbat" comes from the root Shin-Beit-Tav, meaning to cease, to end, or to rest.

On this day, [Jews](#) remember the biblical story describing the creation of the heavens and the earth in six days and enjoy 25 hours of rest from the regular labors of everyday life. It offers an opportunity to contemplate the spiritual aspects of life and to spend time with family. Shabbat observance typically entails refraining from [work activities](#) and engaging in restful activities to honour the day and attending prayer assemblies at synagogue.

The ATTO Challenge

Jewish law (halacha) prohibits doing any form of melakhah (commonly translated as "work" in English), on Shabbat, unless an urgent human or medical need is life-threatening. Travel, buying and selling, and other weekday tasks that would interfere with the spirit of Shabbat are forbidden. The use of electricity is prohibited because it serves the same function as fire or some of the other prohibitions, or because it is technically considered to be "fire."



During Shabbat, synagogue prayer services are held on Shabbat eve (Friday night), Shabbat morning (Saturday morning), and late Shabbat afternoon (Saturday afternoon). In light of the restrictions, observant Jews attend their local synagogue services on Shabbat by foot. Many Jews attend services on Shabbat even if they do not do so during the week. But many are unable to attend independently or at all, due to the restriction of electricity and automobile use.



Movinglife, in collaboration with Zomet Institute, has risen to the challenge.

Although electricity use is categorically forbidden during Shabbat, there is no prohibition on using (for example) a light that was turned on before the Shabbat began, and there are a number of “workarounds” that were developed in modern times to enable the use of certain appliances. Thus, seemingly forbidden acts may be performed by modifying technology such that no law is actually violated. In Shabbat mode, a "Shabbat elevator" will stop automatically at every floor, allowing people to step on and off without anyone having to press any buttons, which would normally be needed to work.

The Zomet Institute in Israel is the leading global authority on devising and certifying electric solutions that are Shabbat-approved. Movinglife turned to Zomet to form a collaboration that would enable Jewish ATTO users to utilize the ATTO in a halachically permissible manner, so that they can gather with their families and communities on Shabbat, and independently attend services at the synagogue without fear of desecration.

The result is the SHABBATTO – a proprietary solution based on the ATTO SPORT, our most recent innovation in scooters. SHABBATTO uses the proprietary technology engineers from the two companies developed together, to create an ATTO that performs outstandingly and can also be used on Shabbat.





SHABB ATTO



Be mobile – even on Shabbat!

Movinglife proudly introduces SHABBATTO – the world’s most advanced, stylish folding scooter, now halachically approved for use on Shabbat by the Zomet Institute in Israel.

The SHABBATTO scooter is identical to the ATTO SPORT – Movinglife’s most recent innovation – and offers the full range of features that make ATTO the world’s best and most loved scooter in Israel, alongside an original Shabbat control mechanism that allows for accessible mobility – even on Shabbat.

The SHABBATTO control, is a proprietary mechanism that was designed in-house by Movinglife engineers in close collaboration with engineers at the Zomet Institute – the highest technological and halachic authority in devising Shabbat-approved technological solutions.

movinglife[®]

SHABB ATTO Controller



Meets the most stringent requirements!

The SHABBATTO control meets the most stringent halachic requirements. Whereby most Shabbat mechanisms in the market depend solely on the Gramma principle, the SHABBATTO control, designed in close collaboration with the Zomet Institute, offers a more advanced and enhanced solution that includes (but is not limited to), the Gramma as well a method called “continuous current modification”.

How It Works:

The ATTO SPORT user can easily – and without the use of tools – install the Shabbat control on the scooter’s handlebar and activate the control before Shabbat. This action turns the SHABBATTO engine on, but lets it operate in “crawl” mode throughout the Shabbat, consuming minimum power.

This halachic principle is known as “continuous current modification”. According to this principle, instead of turning the engine on in order to drive, the user is only adjusting the level of an existing current to move and modify speed.

The fact that the engine is turned on prior to Shabbat, and operates continuously in the background, is a breakthrough that makes the SHABBATTO more halachically enhanced and sets it apart from the other Shabbat-approved scooters in the market. Once Shabbat enters, the user can use the Shabbat control installed on the handlebar to operate the scooter, without fearing desecration of Shabbat.

SHABB ATTO Controller



Originally manufactured mechanism – no need for external installation!

The SHABBATTO mechanism is delivered with the scooter, directly from the manufacturer to the customer. This enables customers to avoid the cost of an external installation service (approx. \$1200). Furthermore, the fact that the SHABBATTO is a solution that was designed to work integrally with the ATTO SPORT scooter, ensures years of technological reliability and peace of mind.

Alternatively, purchasing a scooter that has been adapted for Shabbat use by a third-party vendor holds numerous disadvantages:

1. **High Cost** - An average additional cost of \$1200 to the basic scooter price - essentially doubling the original price in most cases
2. **Basic Quality** - The majority of Shabbat scooters in the U.S. offers basic functionality only and not one offers a foldable option!
3. **Off-the-shelf Shabbat Solution** - The 3rd-party Shabbat control solution will not be one developed by the original manufacturer and functionality will mostly be limited.

Simple operation- no effort or tools required.

To use SHABBATTO on Shabbat, all you have to do is attach the control to the scooter and operate before Shabbat. The control is easily attached to the tiller using a flexible strap. Then simply connect the USB cable to the suitable socket just below the handlebar. To turn on, simply flip the Gramma switch and your scooter is ready for permitted Shabbat use.



***The leading folding scooter on Shabbat,
and on every day of the week!***

**The world's most advanced & stylish folding scooter!
An original Israeli development.**

**Approved for full operation on Shabbat by the Zomet
Institute, Israel's highest professional authority.**

**Includes a breakthrough Shabbat control that meets
the most stringent halachic requirements.**

**The only scooter in the world that includes a
manufacturer original Shabbat control with no
additional installation required!**



Comparison Chart

<i>Features</i>	<i>SHABB ATTO</i>	<i>Competitors</i>
Shabbat control	Original feature	Added, off-the-shelf product
Halachic principle	Gamma + continuous current modification	Gamma only
Shabbat control response rate	Fast response	Mid-slow response
Integral system: Vehicle operation + Shabbat control	Yes	No
Additional cost - Purchasing a scooter with shabbat control	\$150	\$800 - \$1200
Foldable	Yes	No

SHABB ATTO

We took all the **advantages** of ATTO,
Added ATTO SPORT's **innovations**,
And produced the world's **best Shabbat scooter!**



Innovation in motion:

In 2016 we introduced
ATTO - probably the best
travel folding scooter
on the market...

Then, we took it to the
next level...



1.

We preserved the ATTO's market-leading functionality



Drive Mode



Split Mode



Compact Mode



Trolley Mode



Split Mode
allows easy lifting
for placing ATTO in a car
trunk or an airplane's
overhead compartment



Be
Independent

2.

We maintained
ATTO's ability
to be the perfect
travel companion

Approved by
CE / FDA / SGS / ISO





Be
Spontaneous

Be
Compact





SHABB *TTU*

Much **MORE** than
just a Shabbat scooter!



More
Style

Racing inspired design

Up to
30 km/ 16 mi
between charges



More
Range



More
Luxury



PU Leather grips and seat

Left / Right **Front disk brake lever**

Left / Right **Throttle**

Illuminated **LCD display**

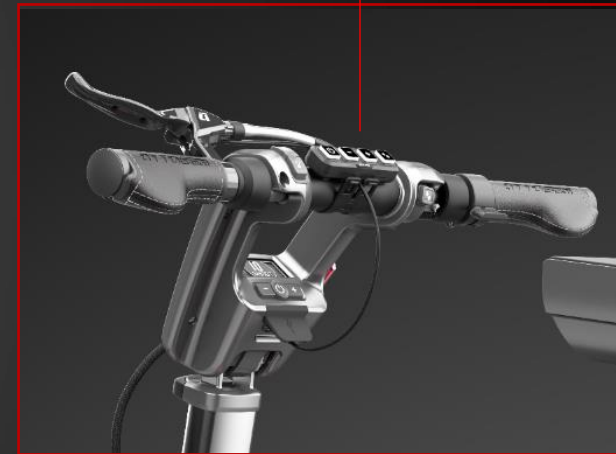
Ergonomic **PU Leather grips**

USB Charger

Shabbat Remote

Speed limit / Cruise control

More Control



More Suspension

Shock-absorbing airless NPT tires
provide smoother ride and 100%
puncture protection





More
Visibility

Powerful LED *Headlights*

More
Visibility

Rear light lifting handle



More Braking Control

ATTO SPORT is geared with an industry-standard regenerative braking system.

We've also added a front disc brake to give ATTO SPORT users greater control.

The disk brake lever can be mounted on either sides of the handlebar.



More Agility

Front half:
27.5 lbs. / 12.5kg



Rear half:
38.5 lbs. / 17.5 kg

More Speed

Maximum Speed:
10 km/h
6 mph



More
Safety

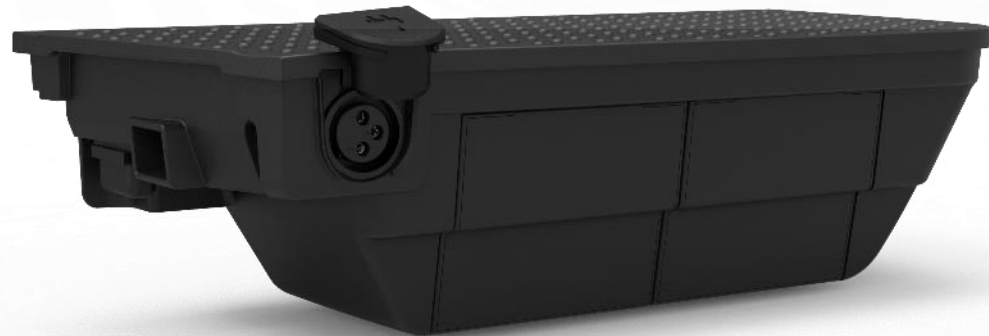
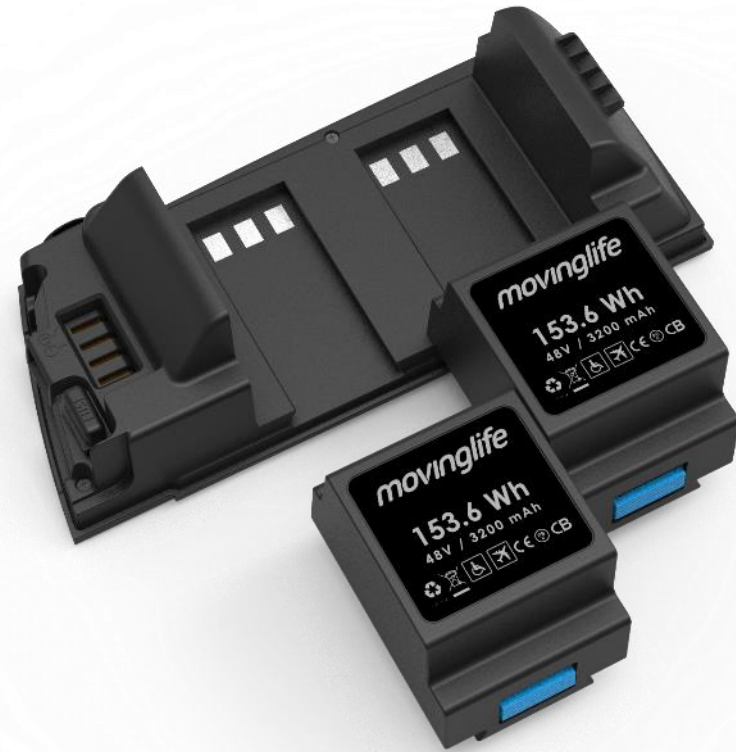
A close-up photograph of a person's hand holding a black key fob. The hand is wearing a blue jacket. The key fob has two buttons with the letters 'L' and 'R' on them. A dashed white line points from the text below to the key fob. The background is a solid red color.

Key fob for locking / unlocking ATTO SPORT

Flight Approved Split Battery

ATTO SHABBAT comes with a splittable battery that enables you to board almost any flight with the vehicle

- Battery: 48 Volt lithium-ion
- More than 30 km / 18.6 miles of continuous driving, only 4 hours on average for full charge
- Charge on-board and off-board
- Charger: International 110-240V AC charger



Plenty of Storage Options

Wide range of
storage accessories
available now





Generous legroom

Think **Big**

12 cm ground clearance in various terrains



Features

- SHABBAT Approved by Zomet institute
- Unique Shabbat remote included
- Sleek, sportscar-like design and details
- Easy to fold into trolley and easy to unfold
- Splits into 2 lightweight segments for easy carrying, compact storage
- Trolley mode makes it convenient to walk with and steer when folded
- Ergonomic design with ample legroom and armrests
- Lithium flight-approved battery and charger
- Rich information LCD display
- Embedded headlights
- Anti-theft wireless key fob
- Shock-absorbing airless NPT tires
- Soft, PU leather trimmings, backrest and seat upholstery
- Rear light reflector
- Cruise control option for longer rides
- Adjustable seat with 3 different heights
- Automatic slowdown on steeper slopes
- Easily adjust height and angle of tiller
- Lightweight aluminium chassis
- Brushless DC motor enhances durability and power
- On/ off button
- 10 km/h (6.2 mph) travel speeds (speed can be switched while driving)
- 3 Wheels enable 52-degree radius
- Onboard USB charging port (support 1 ampere output)
- Warning sound alert (horn)
- One-click shift from forward to reverse
- Automatic reverse travel alert sound
- Left hand compatible
- Rear light lifting handle
- Easy access to battery when folded
- Extra storage room under seat
- FDA, CE, EN 12184, ISO 7176 certified
- 12cm ground clearance in various terrains
- ERB (Electric Release Brake) for safer braking
- Front disk brake for extra safety
- Free wheel (neutral mode) enables wheeling when battery is empty



Dimensions / Weight



Split Mode

Height 28" / 71 cm

Length 15.3" / 38.9 cm

Width 16.5" / 41.9 cm

Weight:

Front half 27.5 lbs. / 12.5 kg

Rear half 38.5 lbs. / 17.5 kg



Drive Mode

Height 35" / 89 cm

Length 47" / 120 cm

Width 22" / 56 cm

Weight:

Assembled 64 lbs. / 29 kg (w/o battery)

Battery 4.1 lbs. / 1.83 kg

Max. User Weight:

264 lbs. / 120 kg

Shipping Dimensions

Height 19.68" / 50 cm

Length 31.49" / 80 cm

Width 16.53" / 42 cm

Weight: 81.57 lbs. / 37 kg

ATTO

ATTO SPORT

SHABB ATTO

PRODUCT LINE EVOLUTION

For 2020 we are excited to offer a wider range of innovative products and have more to come soon... **Stay tuned!**

Note: No EOL planned for ATTO scooters



ATTO ACCESSORIES



ATTO ACCESSORIES



ATTO SPORT

SHABBATTO



ATTO



ATTO



ATTO

2016

2019

2020

movinglife[®]
life changing solutions

